

T.16N. R.65W.

14 | 13

132089

RECEIVED
LARAMIE COUNTY
CHEYENNE, WY.

'93 DEC 14 PM 1 40

CERTIFIED LAND CORNER RECORDATION

DESCRIPTION OF CORNER EVIDENCE FOUND, AND ORIGINAL RECORD (if known)

RECORD: JOHN B. THOMAS, U.S. DEPUTY SURVEYOR JUNE 16th-27, 1871
40.00 CHAINS SET A LIMESTONE 16x12x3 for 1/4 Sec. Cor.

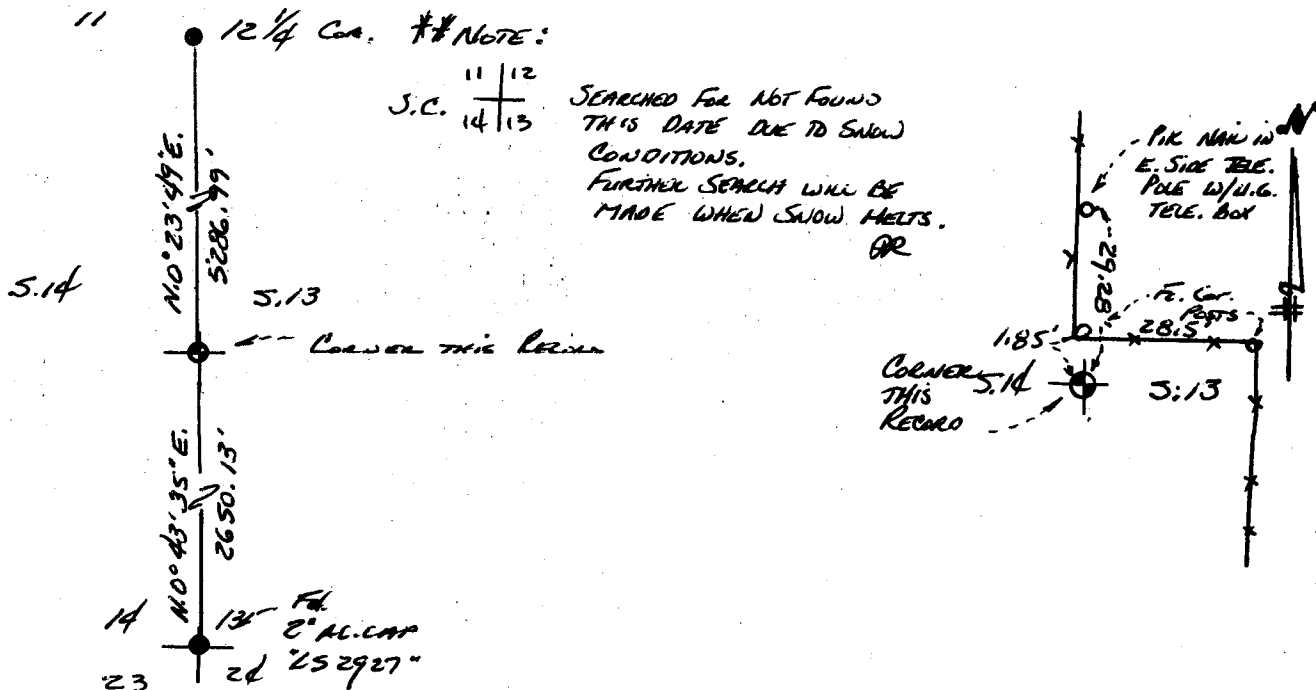
FOUND: A ANGLE IRON WITH BROKEN UNMARKED ORIGINAL LIMESTONE 12"x7"x3"
ADJACENT AND WEST OF ANGLE IRON.

DESCRIPTION OF MONUMENT AND ACCESSORIES ESTABLISHED
TO PERPETUATE THE ORIGINAL LOCATION OF THIS CORNER:

SET: No. 6 x 36" REBAR WITH 3 1/4" ALUMINUM CAP MARKED →
BURIED ORIGINAL STONE ALONGSIDE.
LEFT ANGLE IRON IN PLACE.
SET STEEL FE. POST WITNESS 1' SOUTH.

T.16N. R.65W.
1/4
S.14 / S.13
1993
PLS 2927

SKETCH, WITH COURSE AND DISTANCE TO ADJACENT CORNER IF DETERMINED IN THIS SURVEY.
(May Sketch or Paste Reproduction on Reverse Side.)

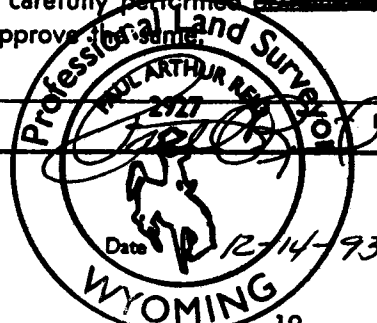


BASIS OF BEARINGS: SOLAR OBSERVATION @ NW Cor. S.20, T.16N. R.65W.

I, PAUL A. REW certify that I have carefully performed or examined the work done on the diagrammed corner as reported on this recordation form and approve the same.

Signature of Surveyor

Registration No.



STATE OF WYOMING,
Office of Clerk and Recorder,
County of _____

This "corner record" was filed for record on the _____ day of _____, 19____, was noted on the cross-index plat and is assigned page No. _____, in book No. _____.

County Official

T.16N. R.65W.

14 | 13

Cross Index No. <u>L-21</u>	T. <u>16N.</u>	R. <u>65W. 6th Mer.</u>
_____	T. _____	R. _____ Mer.
_____	T. _____	R. _____ Mer.
_____	T. _____	R. _____ Mer.
_____	T. _____	R. _____ Mer.
_____	T. _____	R. _____ Mer.
_____	T. _____	R. _____ Mer.